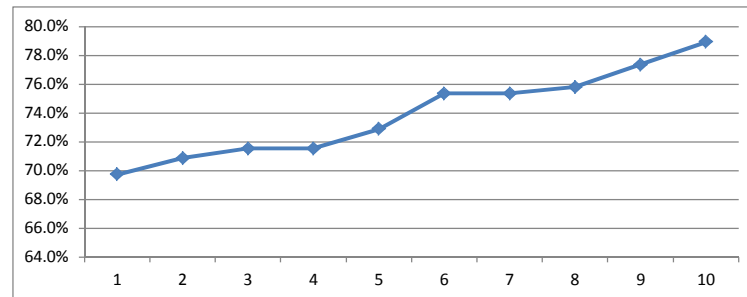


Pattern Testing Krieghoff K-80 Wilkinson 34" Barrel Full Choke Tube 17 July 2016

Pattern Number	10"	10-20"	20-30"	Total	Pattern Percentage in 30" Circle	Central Thickening	
9	67	130	114	311	27.9	69.7%	1.73
4	72	125	119	316	27.3	70.9%	1.66
8	90	129	100	319	26.9	71.5%	2.19
7	70	115	134	319	29.7	71.5%	1.38
2	65	132	128	325	28.1	72.9%	1.54
3	87	143	106	336	25.2	75.3%	2.17
5	69	151	116	336	27.7	75.3%	1.90
6	70	138	130	338	28.0	75.8%	1.60
1	68	166	111	345	26.6	77.4%	2.11
10	81	148	123	352	26.8	78.9%	1.86
Average	73.9	137.7	118.1	329.7	27.4	73.9%	1.79



Gun: Krieghoff K-80 with 34" Top single barrel modified by Tom Wilkinson with Full choke tube (barrel dia 0.740", choke bore 0.701)

Ammunition: Federal Gold Medal 12 gauge cartridges, 1-1/8 ounces of 7-1/2 shot at 1145 FPS

Location: Tri-County Rod and Gun Club - Bonner Springs, KS

Coordinates: 39° 2' 31.62" N, 95° 0' 32.19" W

Elevation: 955 feet above MSL (approximate, from Google Earth)

Time: Start 0740, finish 1115

Temperature: 77°F to 87°F, RH 85% to 75%, Dew Point 72°F to 73°F

Actual Yardage of Test Patterns: 40 yards

Pellets in Shells: Average 446